



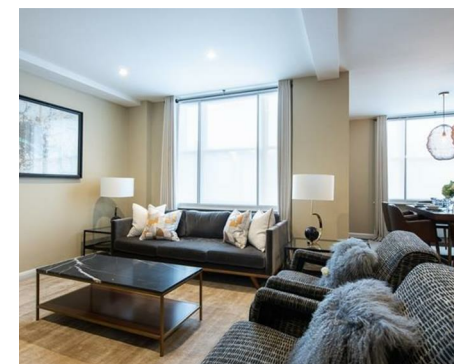
Let **UK** Home

3 Bedrooms

Flat

Located in London

£7,410 Per Month



info@letukhome.co.uk

<https://www.letukhome.co.uk/>

01795 358 886



39 Hill Street, Mayfair London

W1J 5NA



Let UK Home are pleased to offer a stunning three-bedroom apartment in Hill Street located in Mayfair, London.

This BRAND NEW Interior Designed apartment is set over 1203sq ft. and offers, three spacious double bedrooms, two modern fitted bathrooms, spacious reception room, and a unique kitchen with further benefits of storage space and access to a private gated communal garden.

Hill Street, benefits from spacious living accommodation, lift service, on-site building manager, and is nestled conveniently between two of London's parks Hyde Park and Green Park. Residents of this attractive W1 apartment also enjoy easy access to leafy Hyde Park.

Within walking distance are exquisite restaurants, pubs and bars as well as well-known hotels like The Dorchester, auction houses and a variety of members clubs.

The presence of prep schools a stone's throw from these Mayfair apartments ensures young children won't have far to travel while professionals needing to commute on a daily basis can do so without a hassle as Bond Street, Green Park and Marble Arch Tube stations are a short walk away.

39 Hill Street, Mayfair London

£7,410 Per Month



- 2nd Floor
- Video Entry | Pet Friendly
- Offered furnished or unfurnished
- CCTV

- On Site Building Manager
- Lift service | Superfast Broadband
- High Quality Finish
- EPC Rating: C





Let **UK** Home

3F 2 Eastbourne Terrace
Paddington
London
W2 6LG

01795 358 886

info@letukhome.co.uk



Council Tax Band:

Local Authority:

Agents Note: Whilst every care has been taken to prepare these particulars, they are for guidance purposes only. All measurements are approximate and are for general guidance purposes only and whilst every care has been taken to ensure their accuracy, they should not be relied upon and potential buyers/tenants are advised to recheck the measurements.

Energy Efficiency Rating		Current	Potential
Very energy efficient - lower running costs			
(92 plus) A			
(81-91) B			
(69-80) C			
(55-68) D			
(39-54) E			
(21-38) F			
(1-20) G			
Not energy efficient - higher running costs			
		75	83
England & Wales	EU Directive 2002/91/EC		

<https://www.letukhome.co.uk/>